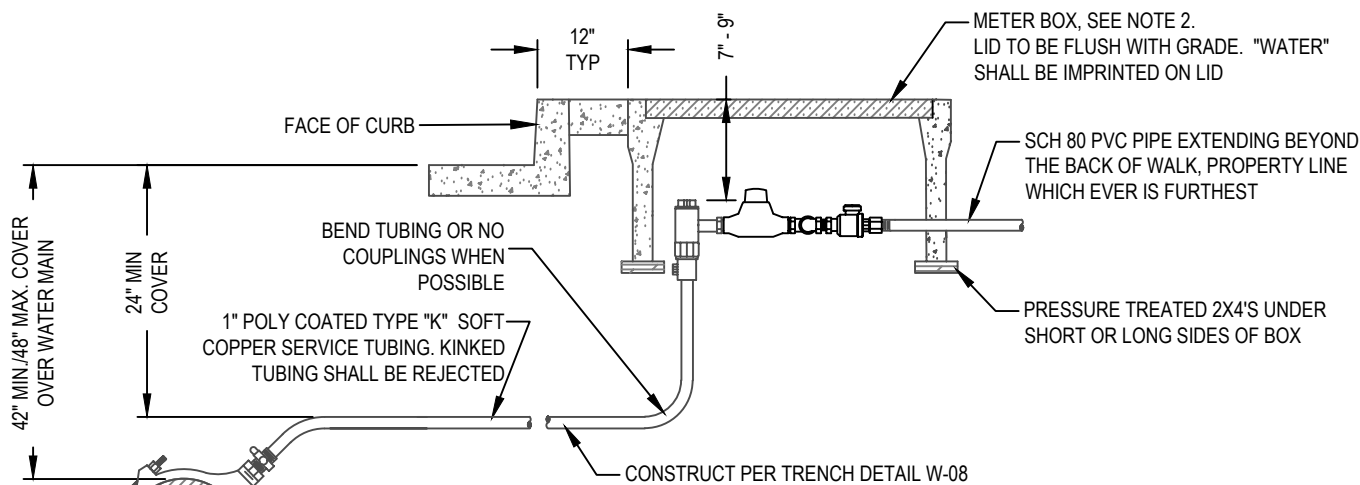
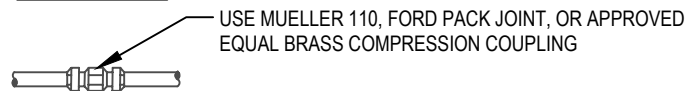


PLAN



ELEVATION





RECONNECTION DETAIL

NOTES:

1. BALL ANGLE CURB METER VALVES: MUELLER #110 COMPRESSION TYPE 3/4" B-24258, MUELLER #110 COMPRESSION TYPE 1" B-24258, FORD COMPRESSION TYPE "Q", OR CITY APPROVED EQUAL 3/4" BA-43-33WQ, 1" BA-43-444WQ
2. METER BOX: CHRISTY B-36 W/ N36RP R-COMPOSITE LID NON TRAFFIC, B-1730 BOX W/ B1730-51GH STEEL CHECKER PLATE LID FOR TRAFFIC. ALL LIDS SHALL HAVE A PORT ACCEPTING THE WIRELESS METER READER.
3. ALL CORPORATION STOPS, ANGLE METER STOPS, COUPLINGS AND CONNECTIONS SHALL BE MUELLER 110, OR FORD TYPE "Q" COMPRESSION TYPE FITTINGS WITH CC THREAD, OR CITY APPROVED EQUAL.
4. ALL PRIVATE INSTALLATION SHALL COMPLY WITH CITY ORDINANCE NO. 503-80 AS AMENDED REGARDING "WATER SERVICES AND CHARGES". DOMESTIC AND FIRE SERVICE LINE SHALL BE SIZED PER CALIFORNIA PLUMBING AND FIRE CODES.
5. THE CUSTOMER SHALL INSTALL SUITABLE CONTROL VALVES ON EACH PRIVATE SERVICE LINE ON THE RISER TO EACH BUILDING OR A MAXIMUM OF 50 FEET FROM THE METER. THE VALVES SHALL CONTROL THE ENTIRE WATER SUPPLY FROM THE SURFACE.

CITY OF WATSONVILLE PUBLIC WORKS & UTILITIES DEPARTMENT

SCALE: NTS		WATER DIVISION STANDARD DRAWING	DRAWN: MAY 2018	REV:
DRAWN BY: STAFF		1-INCH COMBINATION METER	RESOLUTION: 98-18 (CM)	
CHECKED BY: TC		 MARIA ESTHER RODRIGUEZ, CITY ENGINEER	DWG NO. W-02	